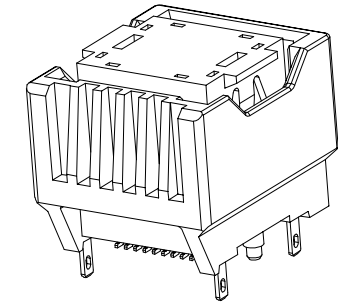
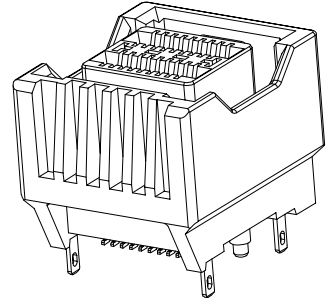
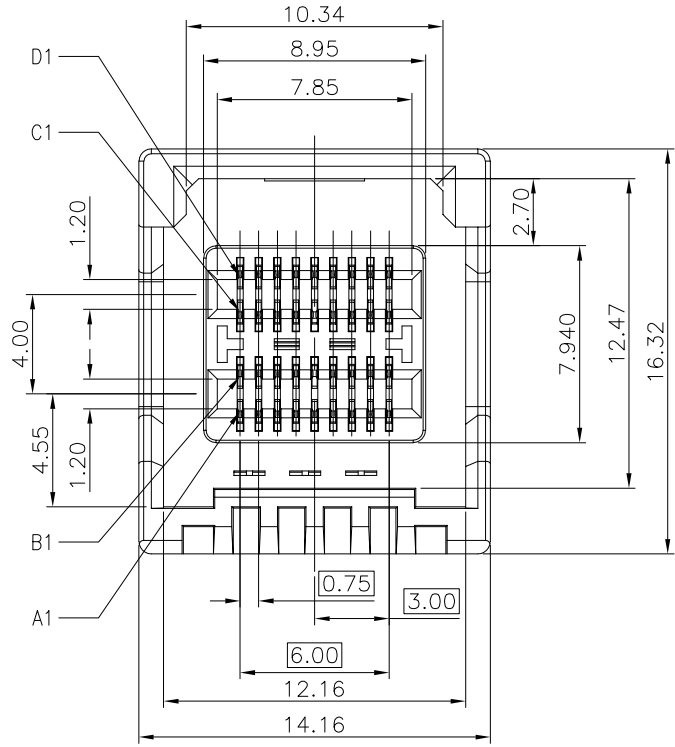
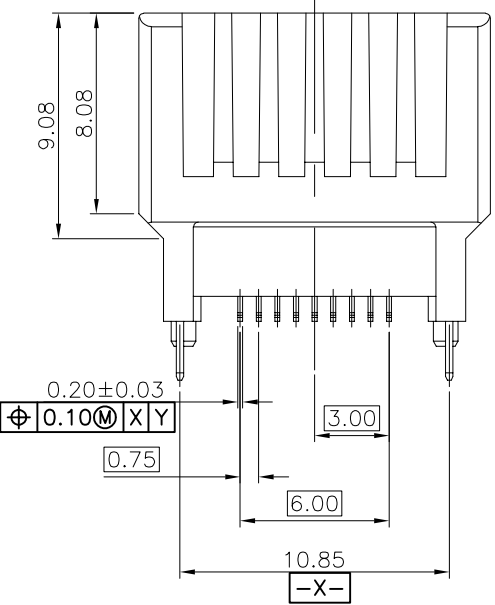
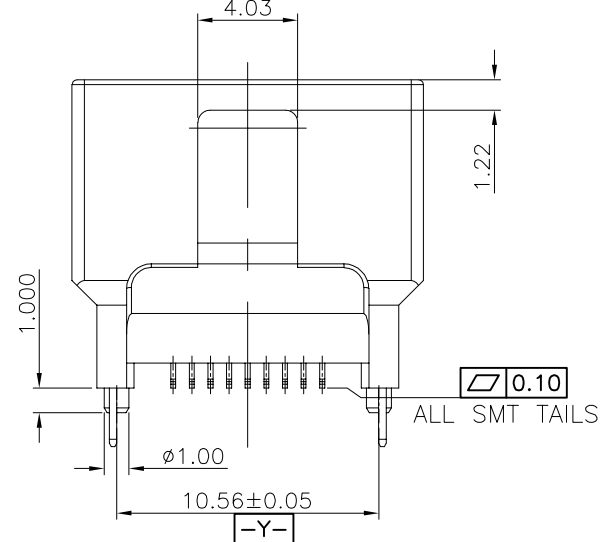
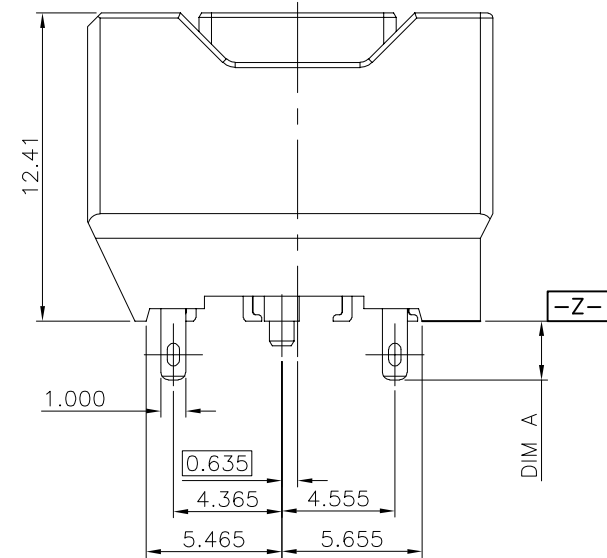


REV.	ECN NO.	MODIFY MATTER	DATE	APPROVED
A		RELEASE TO PRODUCTION		



W/O CAP

WITH CAP



TOLERANCES UNLESS OTHERWISE SPECIFIED:

X.	---
X.X	± 0.38
X.XX	± 0.25
X.XXX	± 0.10
Angle	± 1°

CUSTOMER COPY

DRAWN:	CHENLEI
CHECKED:	CHENLEI
APPROVED:	QINKAIXING

深圳市东方御业科技有限公司
WWW.DFYCONN.COM TEL:0755-27155560

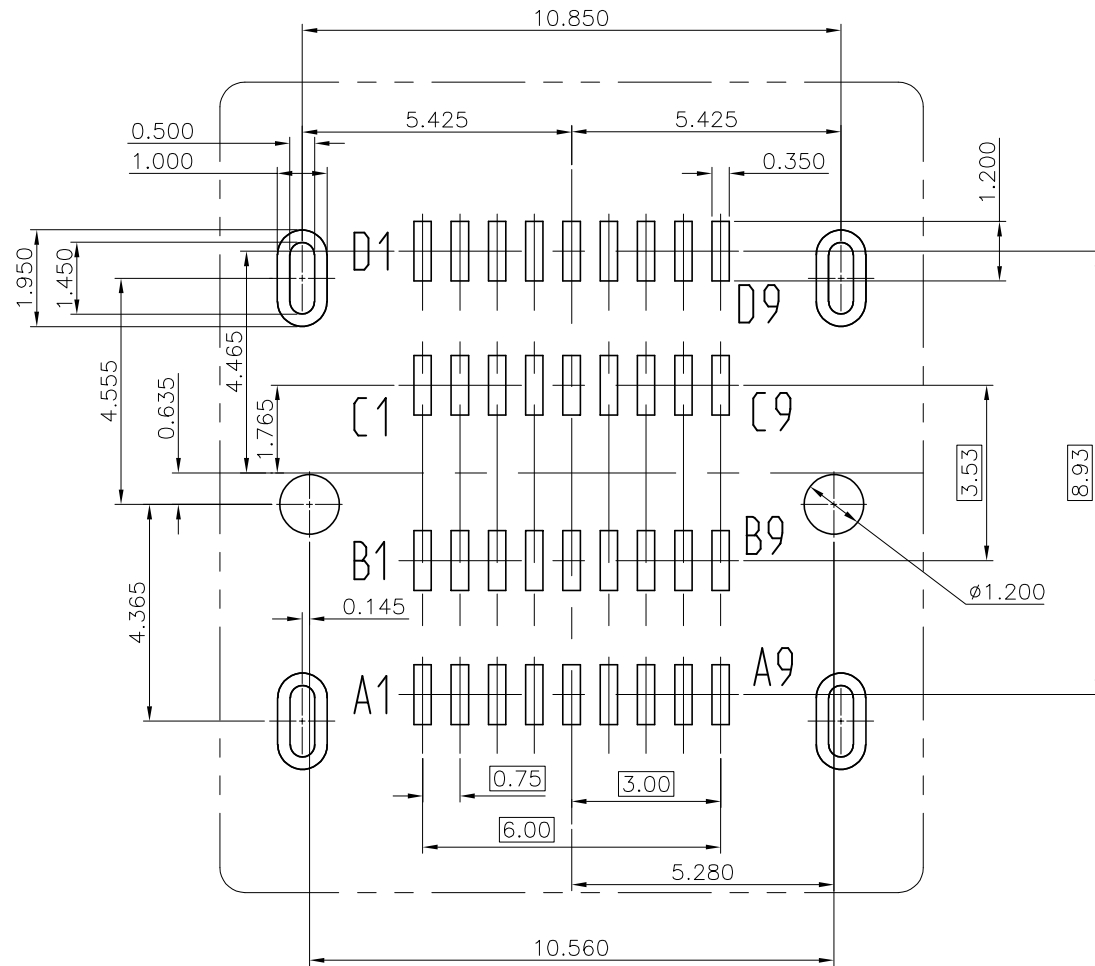
TITLE:	MINI SAS HD SMT TYPE直立式
PART NO:	EAST-MSAS36PB1BR

THESE DRAWING AND SPECIFICATION ARE THE PROPERTY OF Shenzhen Dongfangyue ELECTRONIC CO., LTD. SHALL NOT BE REPRODUCED.

UNIT:	mm	SCALE:	N/A	SHEET:	1:1	REV.	
-------	----	--------	-----	--------	-----	------	--

REV.	ECN NO.	MODIFY MATTER	DATE	APPROVED
A		RELEASE TO PRODUCTION		

- NOTE:
- MATERIAL:
 - HOUSING: HIGH TEMPERATURE THERMOPLASTIC, UL94V-0, COLOR: BLACK
 - CAP & MOLDING: HIGH TEMPERATURE THERMOPLASTIC, UL94V-0, COLOR: BLACK
 - TERMINAL: COPPER ALLOY
 - BOARDLOCK: SUS
 - FINISH:
 - TERMINAL:
 - CONTACT AREA: OPTION
 - SOLDERING AREA: 100 μ" MIN MATTE Tin
 - UNDER PLTING.: 100μ" MIN NICKEL
 - BOARDLOCK:
 - UNDER PLTING.: 50μ" MIN ELECTROLESS NICKEL
 - RECOMMENDED PCB HOLE Ø1.20 ISNPTH FOR ORIENTATION POST.
 - RECOMMENDED PCB ELLIPTICAL HOLE 0.50X1.45 IS PTH FOR BOARD-LOCK
 - MINIMUM PCB THICKNESS:1.57mm
 - PIN ASSIGNMENTS PLEASE REFER TO SERIAL ATTACHED SCSI-3(SAS-3) STANDARD



EAST-MSAS36PB1BR

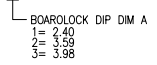


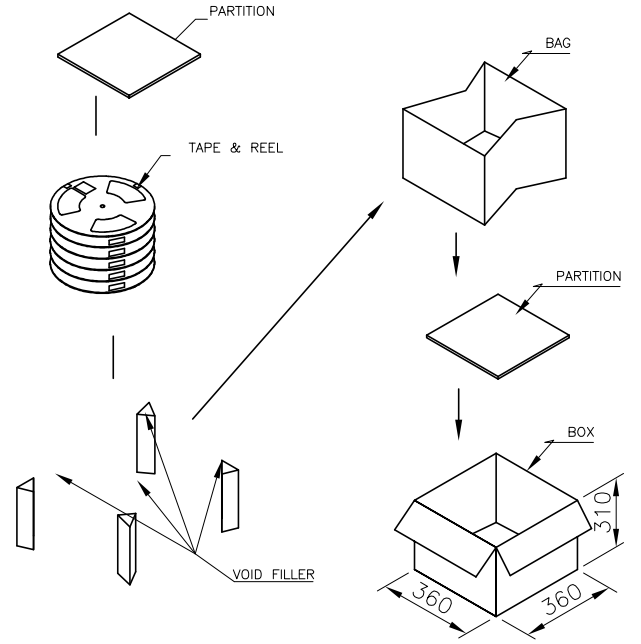
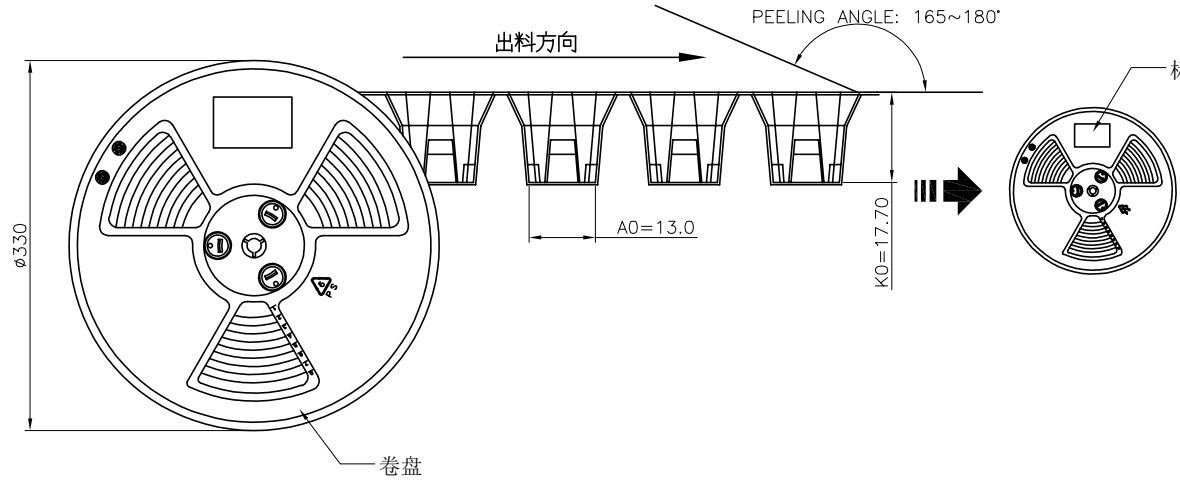
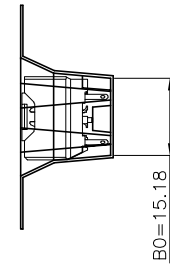
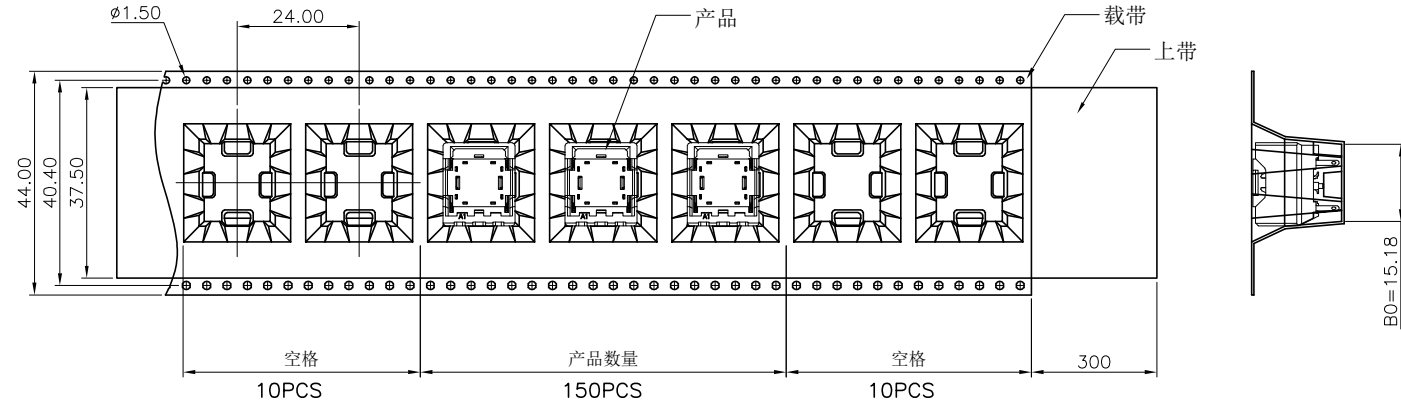
TABLE 1

DIM A	APPLICABLE PCB THK
2.40	1.57~1.60
3.59	2.36~2.79
3.98	3.18

1X1 RECOMMENDED PCB LAYOUT
 (ALL TOLERANCES ARE ±0.05)
 SCALE (2:1)

TOLERANCES UNLESS OTHERWISE SPECIFIED: X. --- X. X ± 0.38 X. XX ± 0.25 X. XXX ± 0.10 Angle ±1°		COSTOMER COPY		深圳市东方御业科技有限公司 WWW.DFYCONN.COM TEL:0755-27155560	
DRAWN: CHENLEI		2017/09/10		TITL: MINI SAS HD SMT TYPE直立式	
CHECKED: CHENLEI		2017/09/10		PART NO: EAST-MSAS36PB1BR	
APPROVED: QINKAIXING		2017/09/10		UNIT: mm	SCALE: N/A
				SHEET: 1:1	REV.

REV.	ECN NO.	MODIFY MATTER	DATE	APPROVED
A		RELEASE TO PRODUCTION		



- NOTE:
1. PEELING SPEED: 300mm/MINUTE
(剥離速度: 300mm/分鐘)
 2. PEELING RESISTANCE: 30g~100g
(剥離力: 30~100g)
 3. PEELING ANGLE: 165° ~ 180°
(剥離角度: 165~180°)
 4. QUANTITY: (數量):
150 PCS/REEL (150個/卷)
6 BOXES/CARTON (6盒/箱)
900 PCS/CARTON (900個/箱)

TOLERANCES UNLESS OTHERWISE SPECIFIED: X. --- X. X ± 0.38 X. XX ± 0.25 X. XXX ± 0.10 Angle ± 1°		COSTOMER COPY		深圳市东方御业科技有限公司 WWW.DFYCONN.COM TEL:0755-27155560	
DRAWN: CHENLEI		2017/09/10		TITIAL: MINI SAS HD SMT TYPE直立式包装图 (RoHS)	
CHECKED: CHENLEI		2017/09/10		PART NO: EAST-MSAS36PB1BR	
APPROVED: QINKAIXING		2017/09/10		UNIT: mm	SCALE: N/A
				SHEET: 1:1	REV.